

# PERI 3D BETONPRINTEN

Efficiënt en effectief bouwen



PERI

Ir. Tim De Schryver

Business Development

02.06.2022





- **Waarom 3D Printen**
- **3DCP en de rol van PERI**
- **The BOD2**
- **Assen en opstelling**
- **Het printen zelf**
- **Fundering**
- **Design**
- **Muurtype en draagkracht**
- **Ramen en deuren**
- **Vloeren en dak**
- **Elektriciteit en sanitair**
- **Afwerkingen**
- **Referenties**

3D betonprinten is bestemd om de bouwwereld op zijn kop te zetten. Met de 3D printer kan er

**sneller** en **efficiënter**

gebouwd worden zonder bekisting, met

**architecturale**

**vrijheid**. Dit maakt het 3D printen het

**ideale alternatief** voor

bakstenen en houten constructies.



# 3DCP en de rol van PERI



**Nieuwe markt**

**Kennis delen**

**Specifieke sales**

**Service**

**3DGCP**



Enige 2<sup>de</sup> generatie betonprinter op de markt.

Modulair systeem

Koop / Huur

CE gecertificeerd

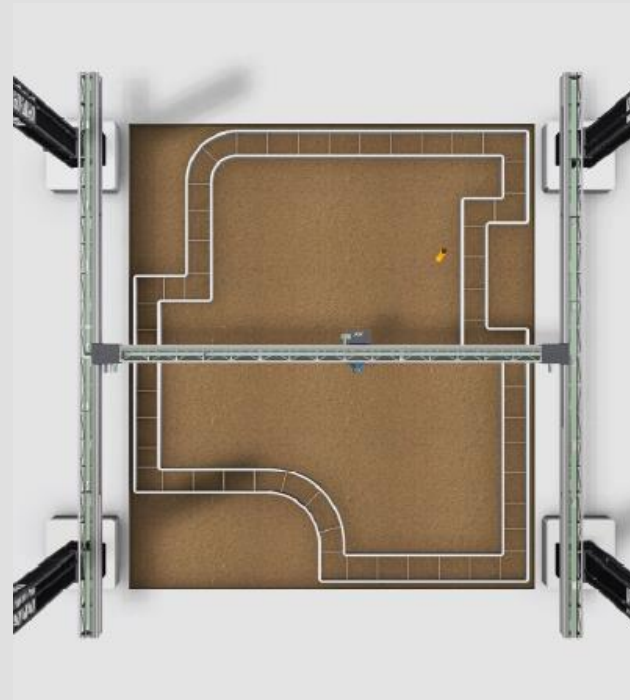
Snelste 3D printer 1m/sec

Slice 20 mm X 50 mm

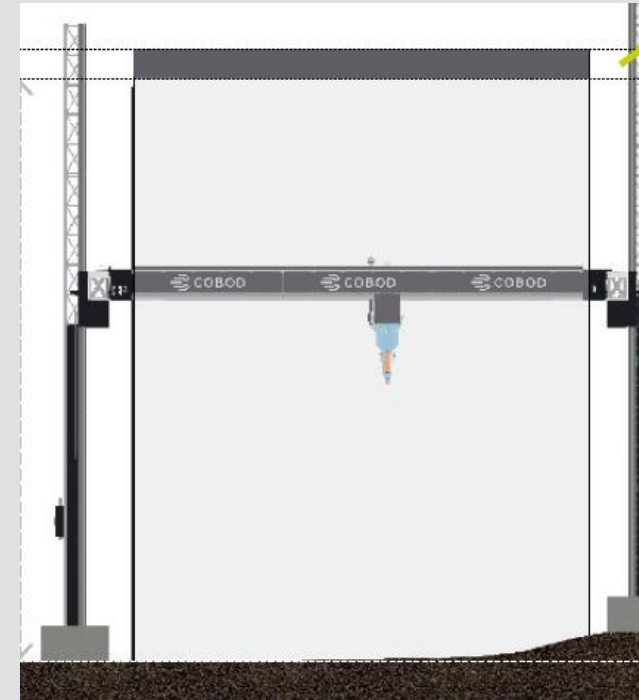




Assen benoeming

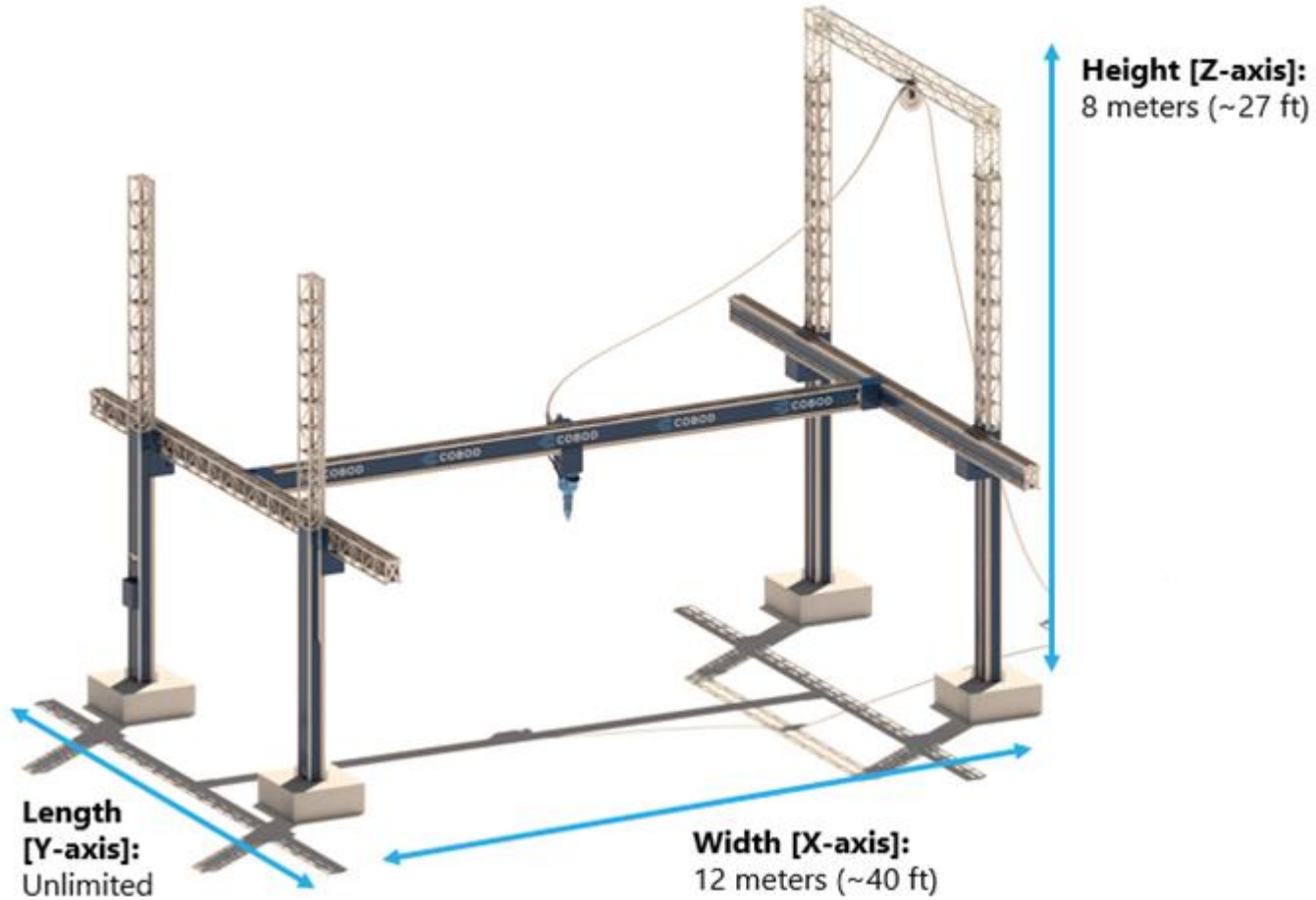


Bovenaanzicht



Zij-aanzicht

## Printer and concrete batch plant overview, printable area (meters/ft)



## 7 stappen

1. Plan uitwerken – COBOD software
2. Installatie BOD2
3. Funderingen
4. Wanden
5. Horizontale constructies
6. Afwerking
7. Demontage





# Fundering



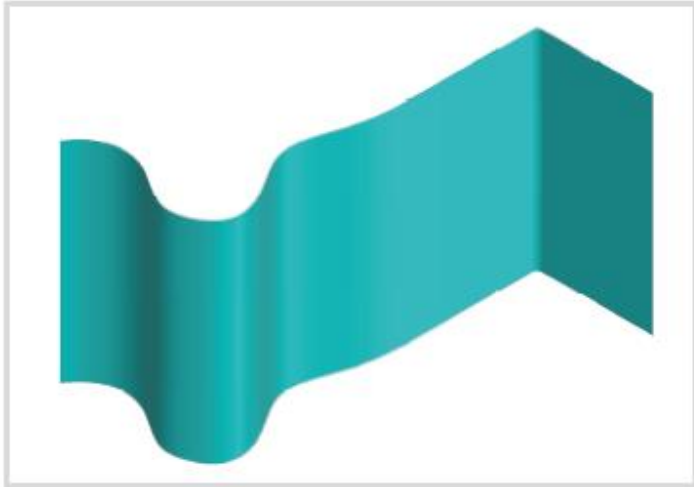


Fig 01 : Surface representing the axis of the 3D printed wall in CAD

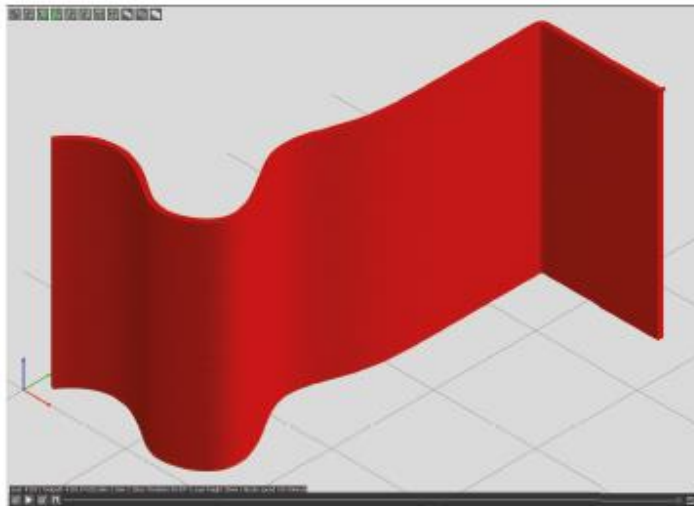


Fig 02 :Surface imported to COBOD Slice and divided into layers of certain height and width

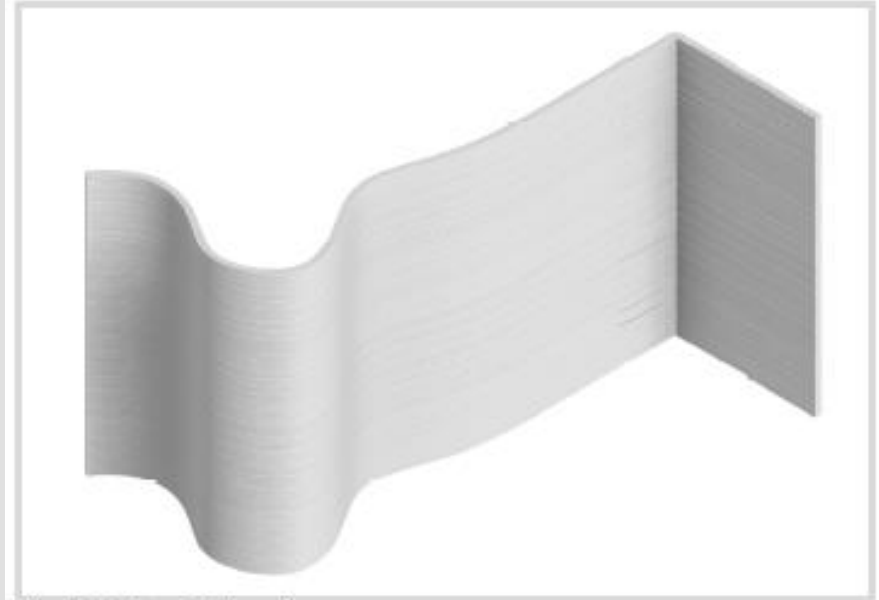
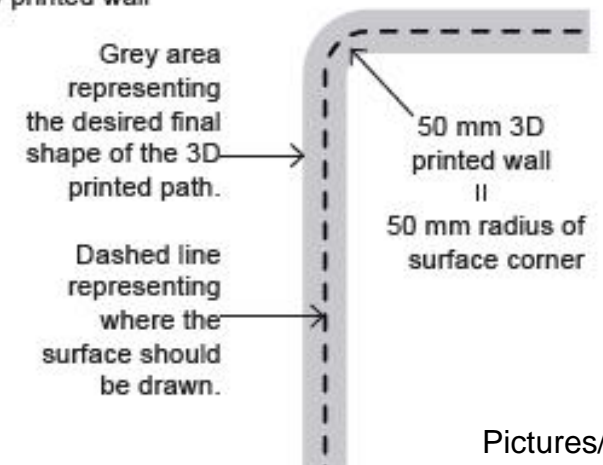
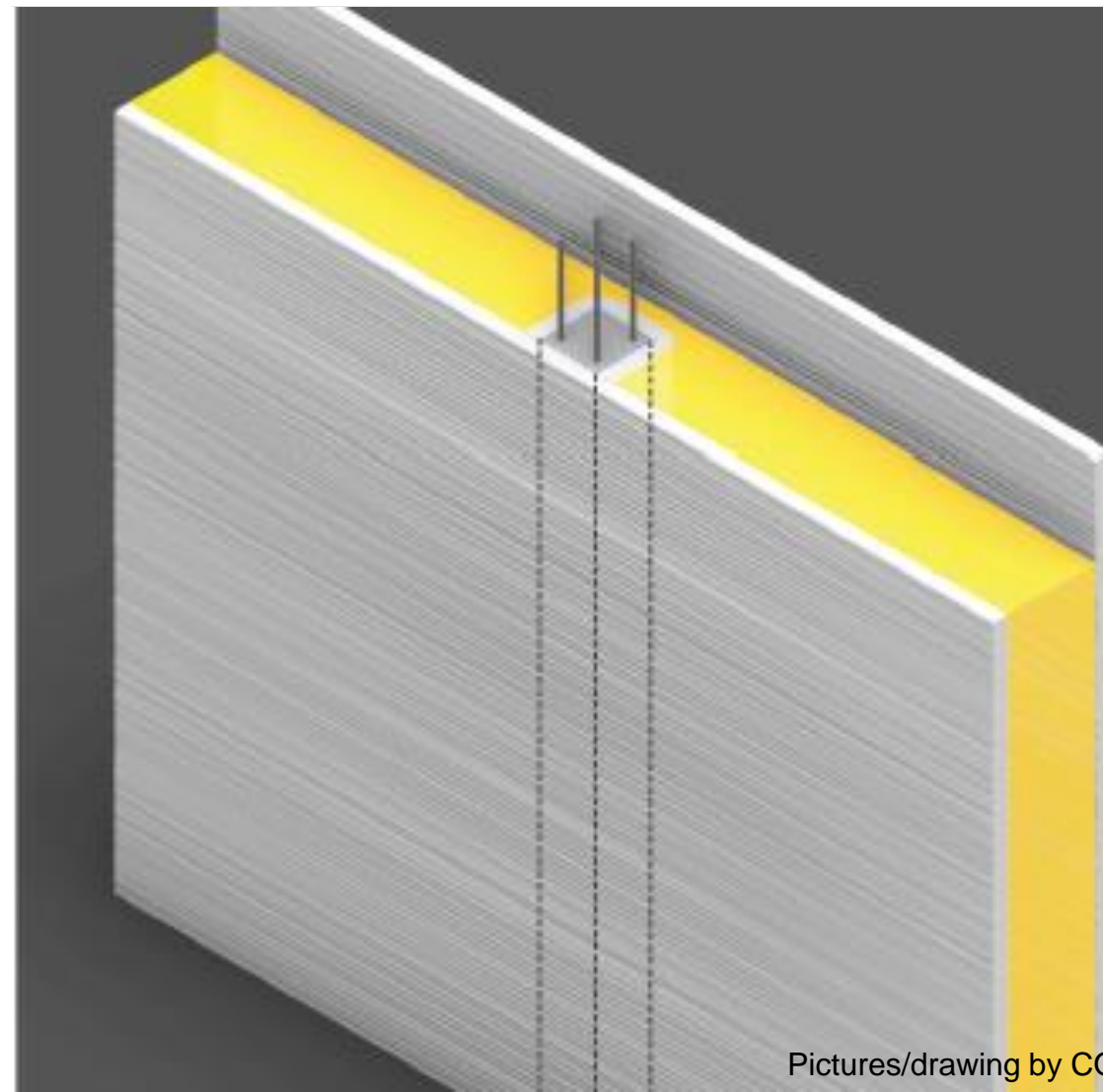
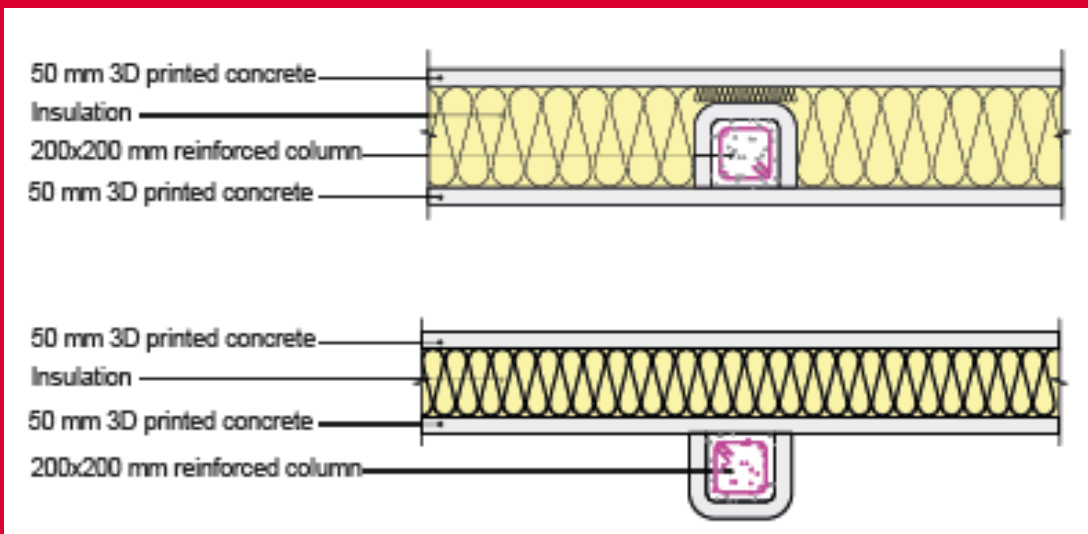


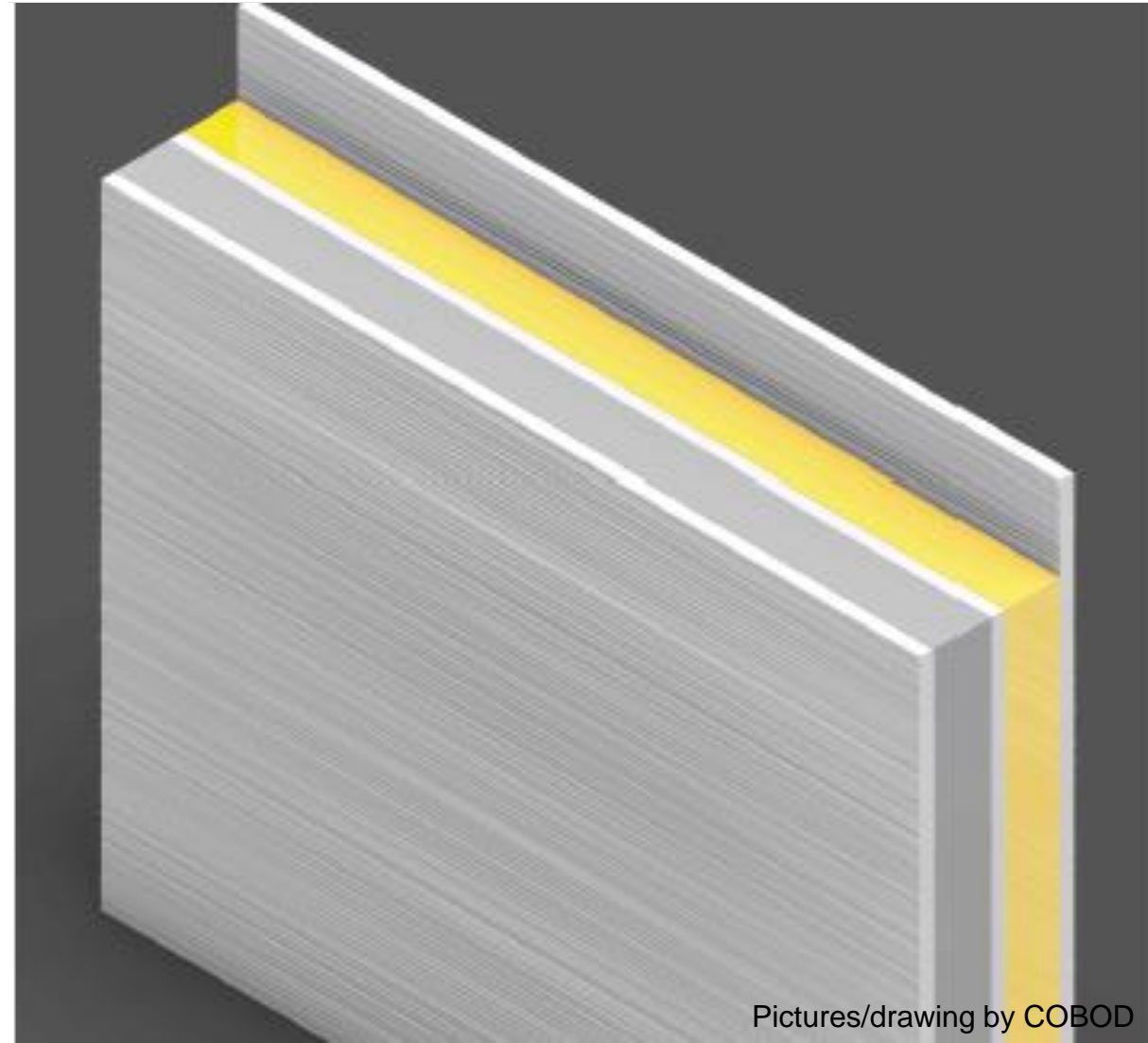
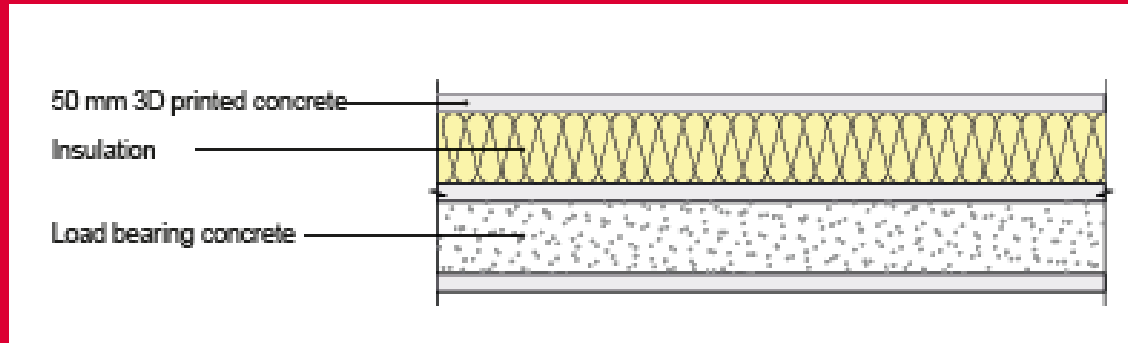
Fig 03. 3D printed wall



## Holle muur met geïntegreerde kolom



## Dubbele wand



# Draagkracht



**Volledige wand als draagkracht**

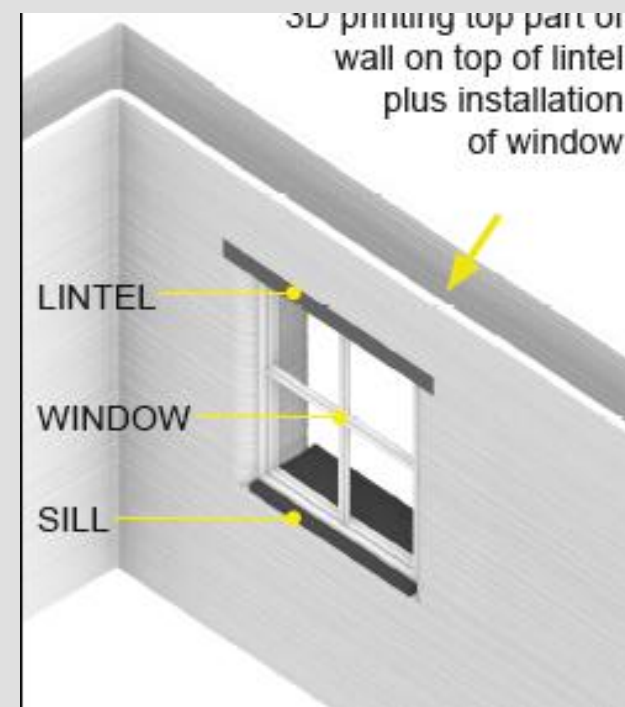
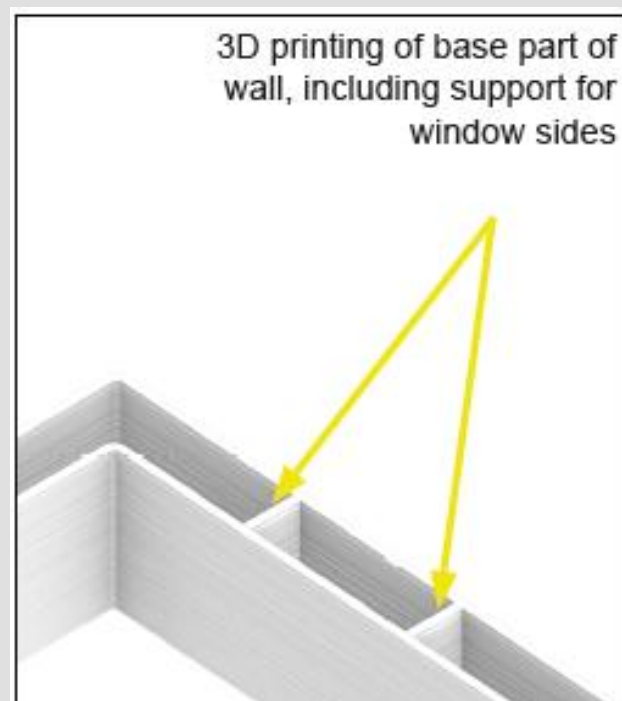
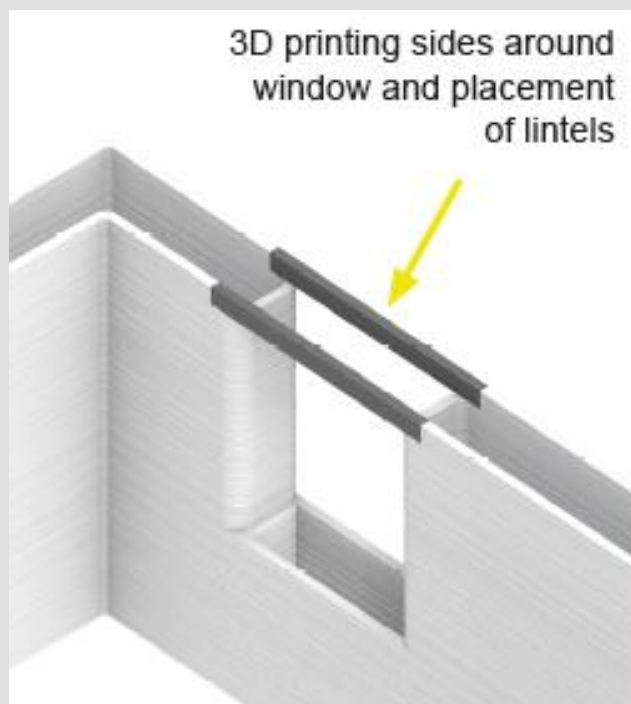
**Geïntegreerde kolom**

**Aparte muursecties**

**Volgens lokale verplichtingen**



## ■ 3D geprinte slide (prefab) of metalen linteel

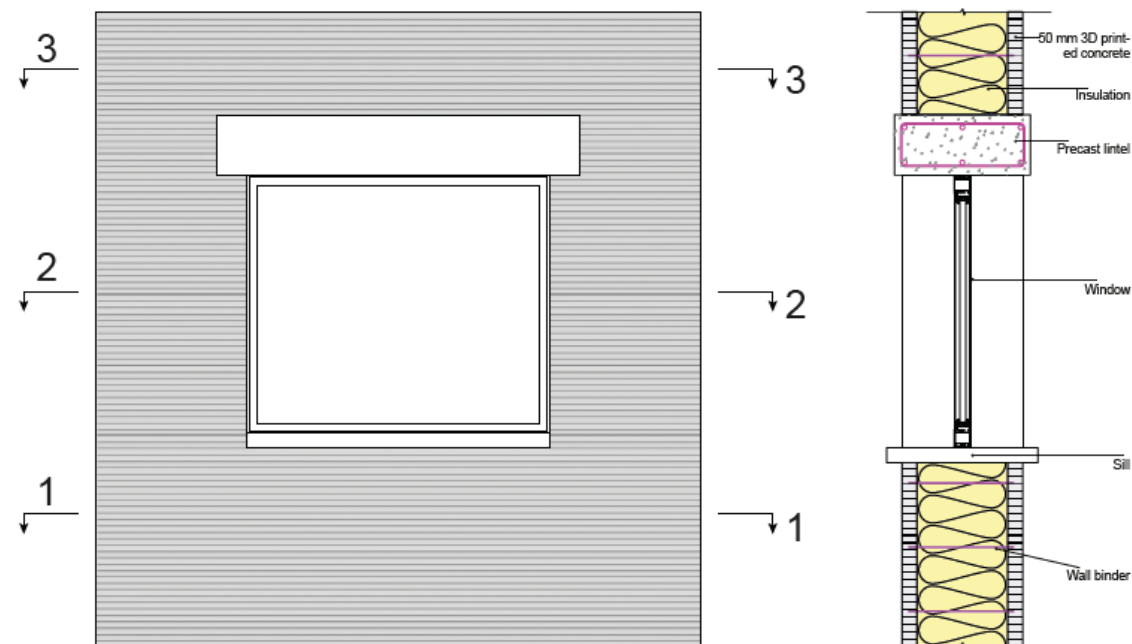
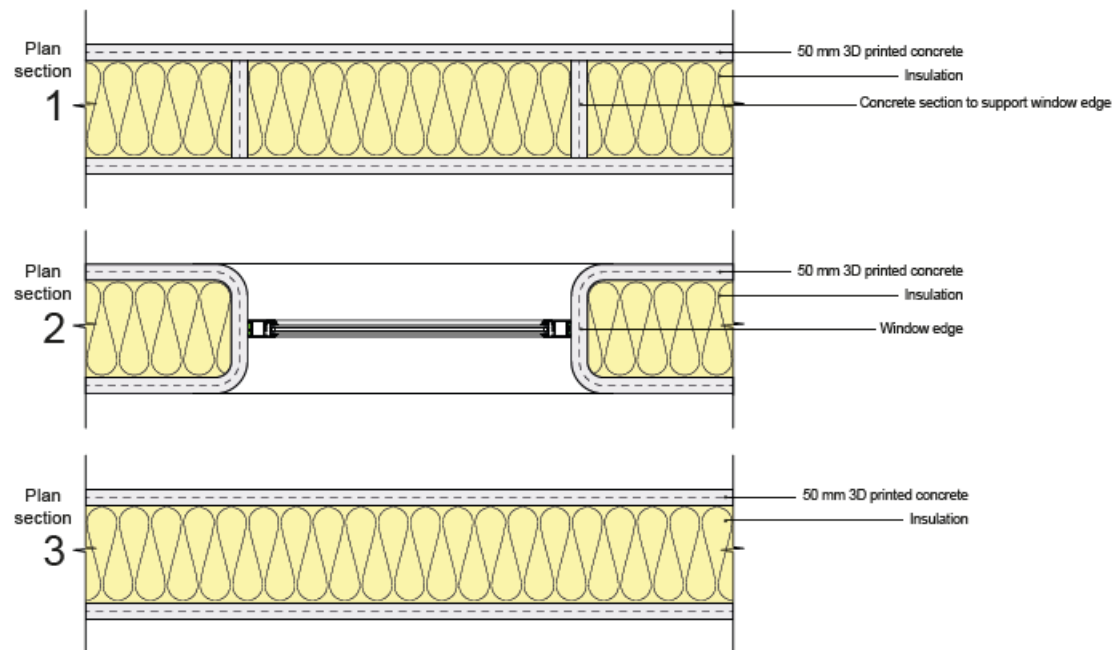


**Prefab balk of linteel**

**Basis mee printen**

**Afwerking**

# Ramen



# Deuren

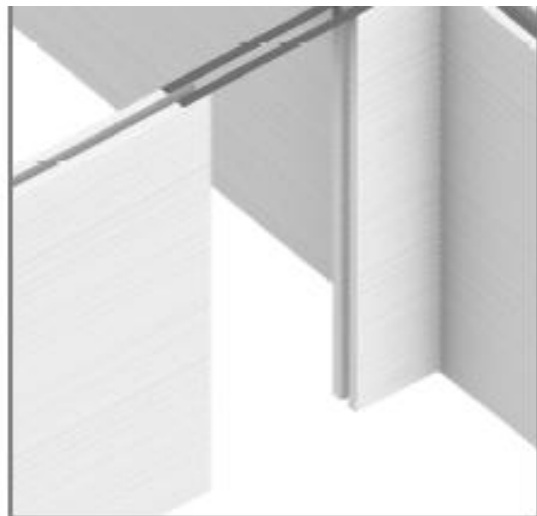
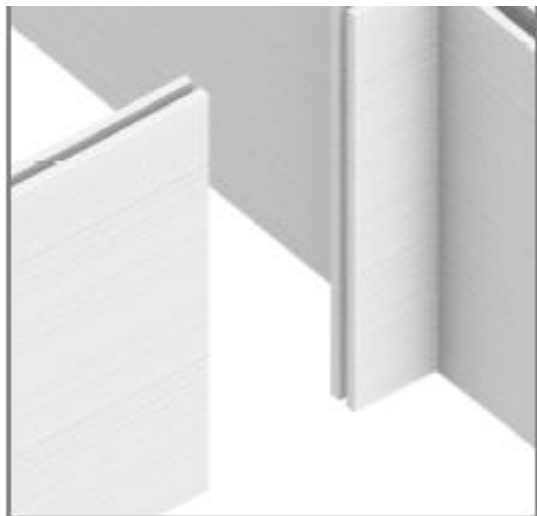
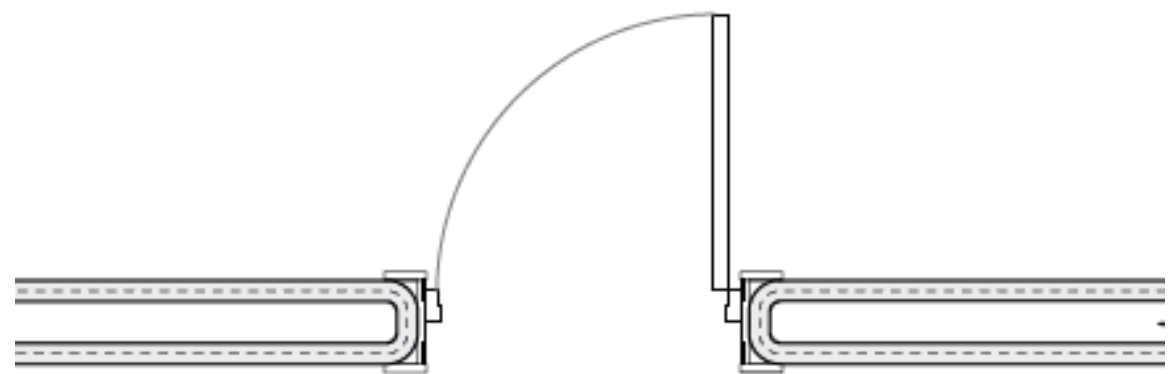
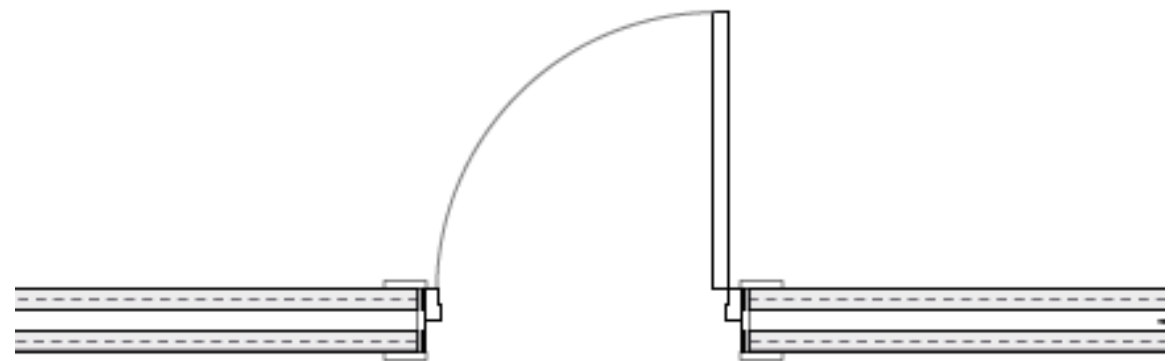
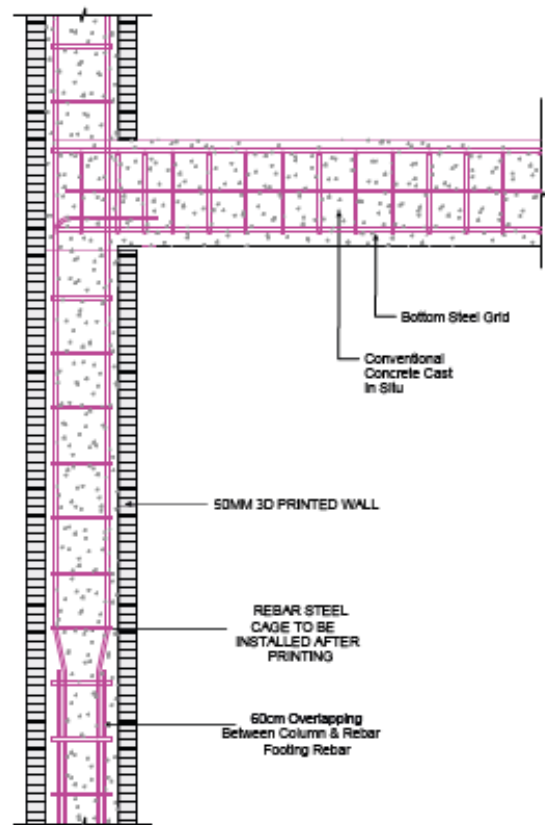


Fig. 21

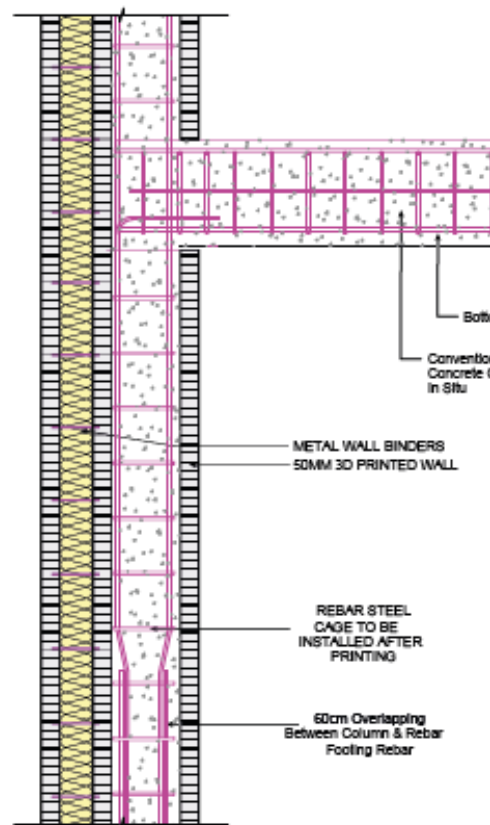
Fig. 22



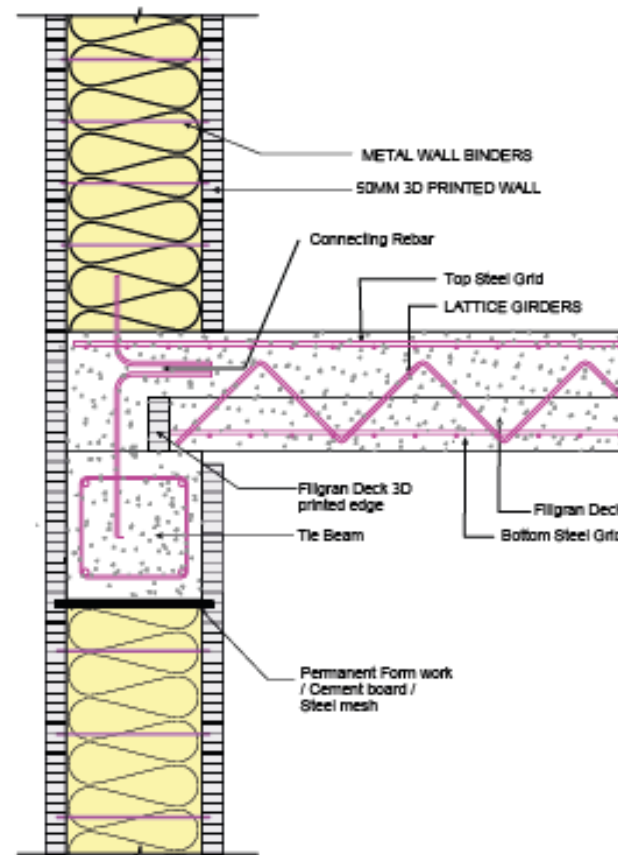




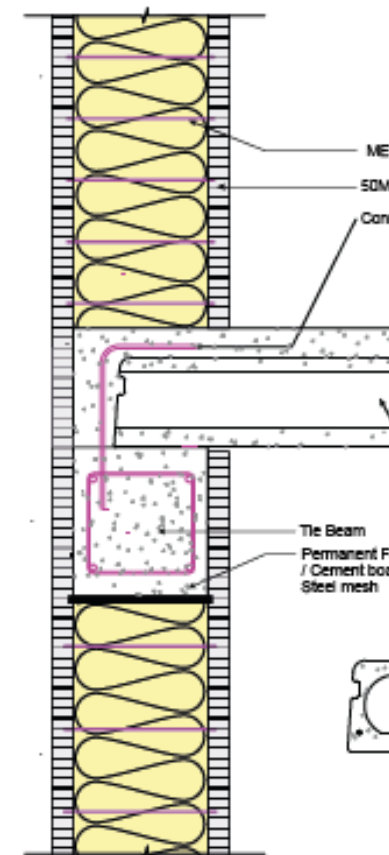
A) Concrete slab/reinforced column connection



B) Concrete slab/reinforced column with additional insulation



C) Filigree slab



D) Hollow core slab

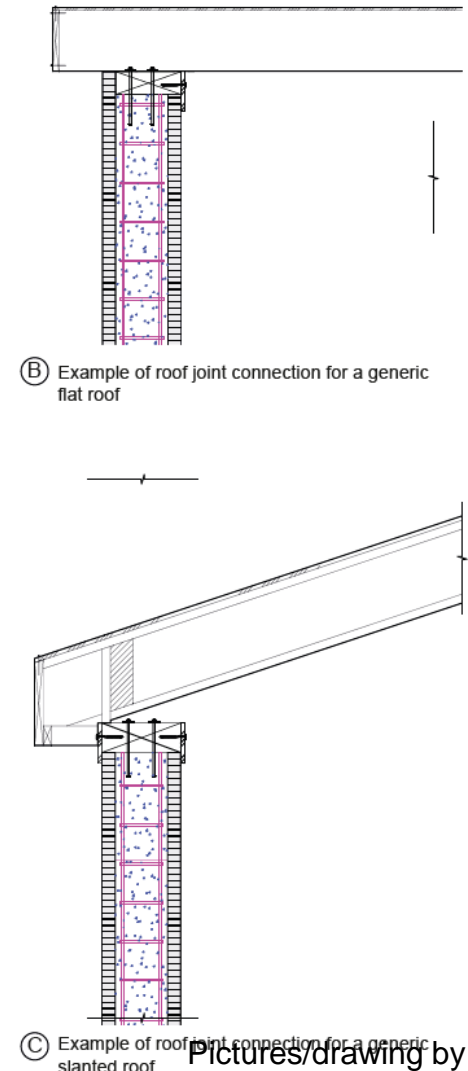
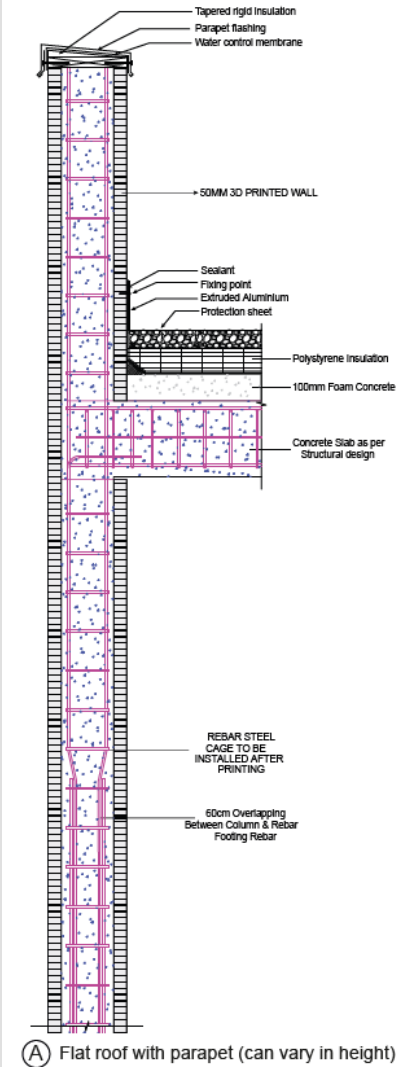
# Dak

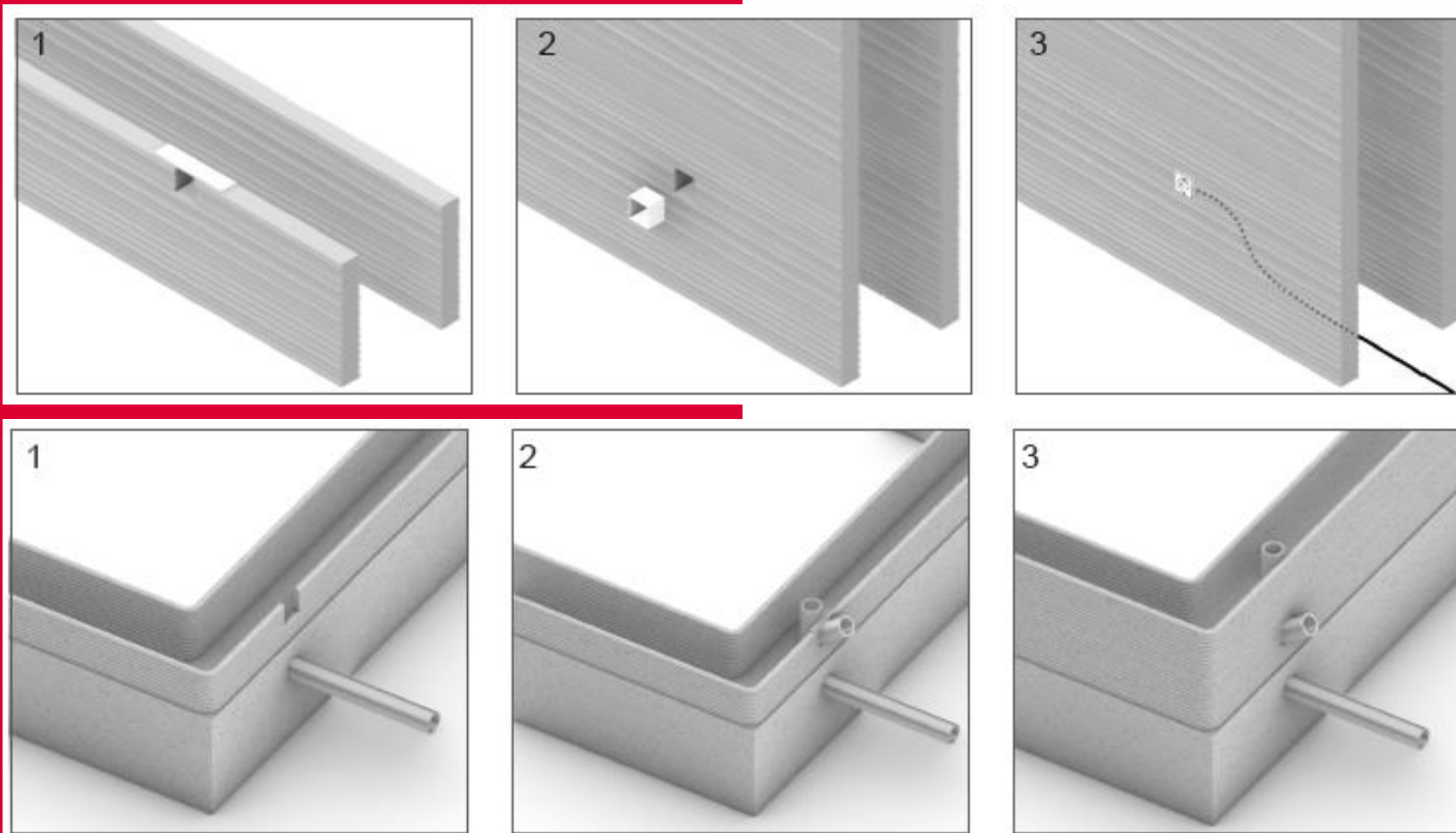


Houten dak

Steeldeck

Beton dak









# Afwerkingen







Pictures/drawing by COBOD